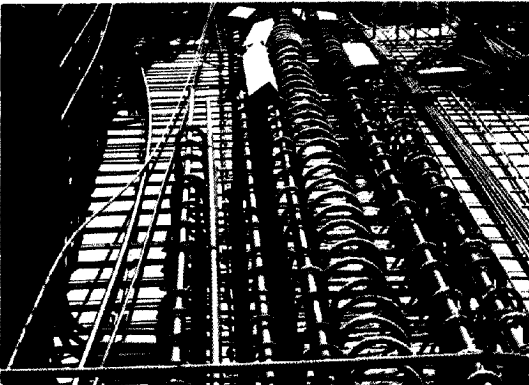


Concrete forms were preassembled with 600 mm walkways. ▲

For many vertical connections, mechanical splices were once again employed instead of bulky laps. Where compression only devices were required, adjoining ends of rebar, saw-cut to tight tolerances, were held in position by the connectors as the concrete was poured.

The ultra fast-tracking approach would dictate ingenuity and cooperation by all trades. Interaction between the RAN Consortium and the reinforcing steel fabricator was crucial to review complicated reinforcement placing sequences, since the design/build schedules did not allow the luxury of time for the submission and approval process common to other construction methods.

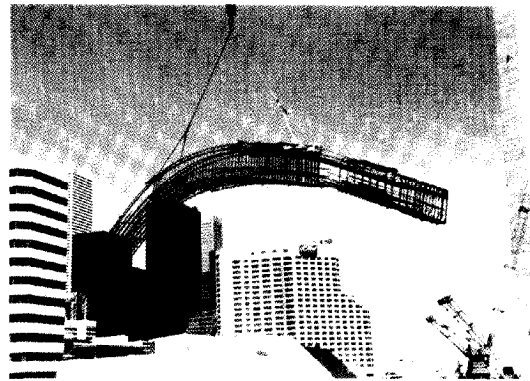


Reinforcing steel in the SkyDome is almost twice the weight of steel in the roof. ▲

Using cast-in-place reinforced concrete not only saved time – it was also cost-efficient. Since its natural properties render it virtually fireproof, the need for extra fireproofing is unnecessary. Nor does it have to be painted. SkyDome's exterior finish is exposed concrete.

Reinforced concrete's inherent adaptability makes it possible to conform to any shape or form. No matter how eccentric, the combination of rebar and concrete greatly increases the stability of a structure; vibrations and sounds are more easily absorbed.

The reinforced concrete cantilever design of the seating levels not only formed the stepped aiseways, but, allowed for an unobstructed view of the complete playing field.



2000 rebar cages were prefabricated at ground level. ▲

The 15 000 tonnes of reinforcing steel used in SkyDome varied in size from 10M to 55M and represents almost twice the amount of steel in the roof. Predominantly grade 400 MPa, some of the rebar was a weldable grade and some epoxy-coated. The epoxy was used mainly in high-traffic areas such as vehicular ramps, as well as in places where wintertime use of salt called for a durable component.

There is more than a passing resemblance between SkyDome and Rome's Coliseum. Viewing these edifices, comparisons are inevitably made. Rome's Stadium has endured for a couple of thousand years – SkyDome undoubtedly will be a landmark centuries from now.