



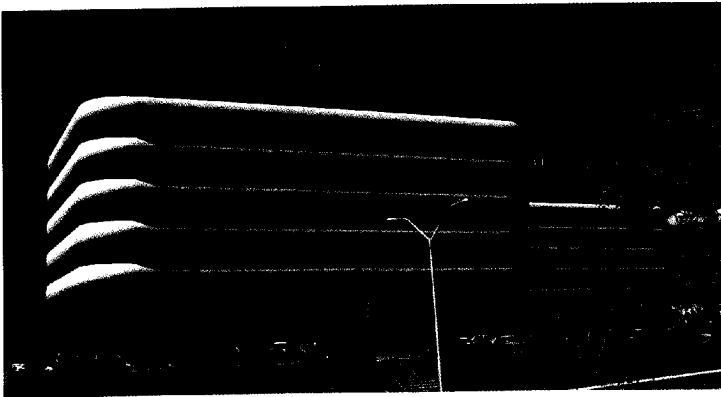
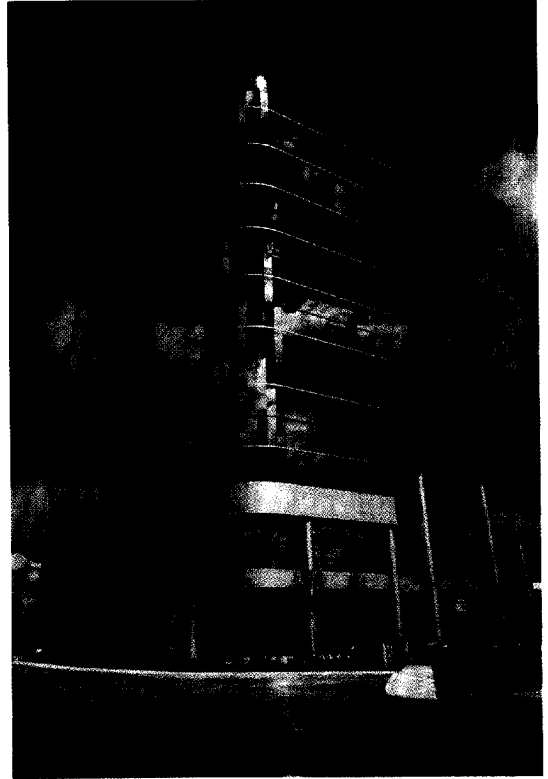
By utilizing a reinforced concrete core in the West Metro building, as well as in Markham's 11-storey President's Choice, Lamb says that Inducon saved both money and time as there was no need for any external bracing.

"Since these brand new office buildings do not need the external bracing, there is more flexibility in the cladding of the building. In addition, Inducon is able to design much wider window space using curtain walls. Given the amount of time many office workers spend in their offices, this added feature is most welcome."

"The weight of the reinforced concrete structure increases the stability of the building against overturning due to earthquake and wind loads," says Lamb. "We always build with an eye to the worse case scenario."

Without a doubt, Yaworski says, Inducon will continue to choose concrete over other competing structural materials. "We are talking about a flexible material that is almost always available. Reinforced concrete, with its high strength specialty varieties, allows for choice even once a builder has chosen to work with concrete," says Yaworski.

"As a builder and developer I have to ask myself . . . Why look for another material when concrete fits our needs so well?"



### Credits

INDUCON DEVELOPMENTS CORPORATION  
INDUCON DESIGN/BUILD ASSOCIATES

Photos: Kendrick Communications



**REINFORCING STEEL INSTITUTE OF ONTARIO**  
1 Sparks Avenue, Willowdale, Ontario M2H 2W1  
(416) 499-4000 / Fax (416) 497-4143