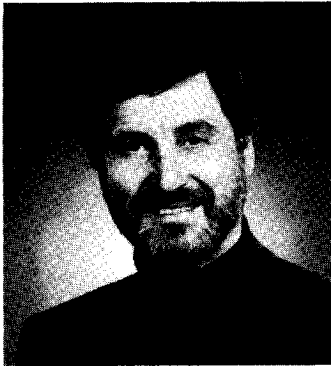


NEW RSIO PRESIDENT



Mr. Larry Paikin, Ennis-Paikin Steel Limited, a Subsidiary of Ennisteel Corp., Hamilton, has been elected President of the Reinforcing Steel Institute of Ontario for the 1988-1989 year.

Mr. Paikin, who had served as the first President of the Institute in 1973, noted in his remarks that rebar tonnages shipped from the Institute's Mill Members to the Fabricator Members in the

preceding year - July, 1987 to June 30, 1988, had reached a record of 197 400 tonnes.

He said that he looked forward to another busy year in the construction industry, and a productive year in the Institute as it moves ahead in its program of providing buyers of construction and the design community with information on the benefits of cast-in-place reinforced concrete construction.

FUTURE OUTLOOK REBAR

At the RSIO annual meeting, Britt Doherty, an Industrial Products Analyst for RBC Dominion Securities, presented an outlook on the Canadian Steel Industry, forecasting an average growth for 1989 of 2.2% with higher interest rates and a stronger dollar.

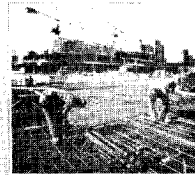
He presented a list of mega projects in the planning stage totalling fourteen and one half billion dollars scheduled to start mid 1989 and demonstrated with a graph that one billion worth of construction spending on these projects equated to 20 000 tonnes of steel.

Recent events support that forecast and point to the present economic cycle sustaining a healthy Steel Industry. Britt charted the business cycle of scrap, anticipating that the rise in prices had ended but, admitting a small increase might be possible in early 1989.

The charts relating to the Construction Industry showed an impressive list of major projects in the Toronto area with a total of twenty-one million square feet for completion in 1993. It is clear that Mr. Doherty has a good depth of knowledge of the Steel Industry and its profitable impact on the economy.

RSIO PUBLICATIONS AND DESIGN AIDS

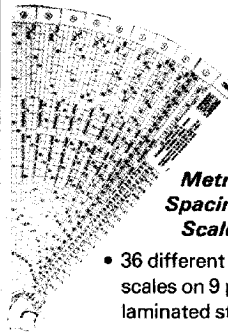
REINFORCING STEEL



MANUAL OF STANDARD PRACTICE

Manual of Standard Practice

- Industry Practices for Estimating Fabricating Detailing Placing
- Nationally accepted standard



Metric Spacing Scales

- 36 different scales on 9 plastic laminated strips
- For ordering and costs contact the Institute.

Rebar Size	Weight (kg/m)	Area (mm ²)	Yield (kg)	Tensile (kg)
10	0.617	78.5	15.7	24.5
12	0.888	110.4	22.2	34.5
14	1.21	151.9	30.1	47.0
16	1.57	201.1	40.2	62.0
18	2.00	254.3	53.4	81.0
20	2.47	314.2	65.8	100.0
22	2.98	380.1	80.0	121.0
24	3.53	452.4	96.5	145.0
26	4.12	531.3	115.0	172.0
28	4.75	617.3	135.0	201.0
30	5.43	710.6	157.0	233.0
32	6.16	811.6	181.0	268.0
34	6.93	920.4	207.0	306.0
36	7.75	1037.3	235.0	347.0
38	8.61	1162.4	265.0	391.0
40	9.52	1295.4	297.0	438.0
42	10.47	1436.4	331.0	488.0
44	11.46	1585.4	367.0	541.0
46	12.49	1742.4	405.0	597.0
48	13.56	1907.4	445.0	656.0
50	14.67	2080.4	487.0	718.0
52	15.82	2261.4	531.0	783.0
54	17.01	2450.4	577.0	851.0
56	18.24	2647.4	625.0	922.0
58	19.51	2852.4	675.0	996.0
60	20.82	3065.4	727.0	1073.0
62	22.17	3286.4	781.0	1153.0
64	23.56	3515.4	837.0	1236.0
66	25.00	3752.4	895.0	1322.0
68	26.48	3997.4	955.0	1411.0
70	28.00	4250.4	1017.0	1503.0
72	29.56	4511.4	1081.0	1600.0
74	31.17	4780.4	1147.0	1701.0
76	32.82	5057.4	1215.0	1806.0
78	34.51	5342.4	1285.0	1915.0
80	36.24	5635.4	1357.0	2028.0
82	38.01	5936.4	1431.0	2145.0
84	39.82	6245.4	1507.0	2266.0
86	41.67	6562.4	1585.0	2391.0
88	43.56	6887.4	1665.0	2520.0
90	45.49	7220.4	1747.0	2653.0
92	47.46	7571.4	1831.0	2790.0
94	49.47	7930.4	1917.0	2931.0
96	51.52	8297.4	2005.0	3076.0
98	53.61	8672.4	2095.0	3225.0
100	55.74	9055.4	2187.0	3378.0

Pocket Cards

- PC 2 - Rebar Identification - Mill Markings
- PC 3 - Bar information standard hooks and laps



Case History Reports

- Shopping Mall
- Parking Structure
- Office Tower
- Office Buildings



REINFORCING STEEL INSTITUTE OF ONTARIO

One Sparks Avenue
Willowdale, Ontario M2H 2W1
Tel: (416) 499-4000 / Fax: (416) 497-4143

Technical Director - J. Warren Webster, P.Eng.